

# HYDRA KOOL



PULL OUT  
CONDENSING UNIT



PULL OUT EVAP PAN  
FOR EASY CLEANING  
ON SELF CONTAINED



PULL DOWN NIGHT CURTAIN

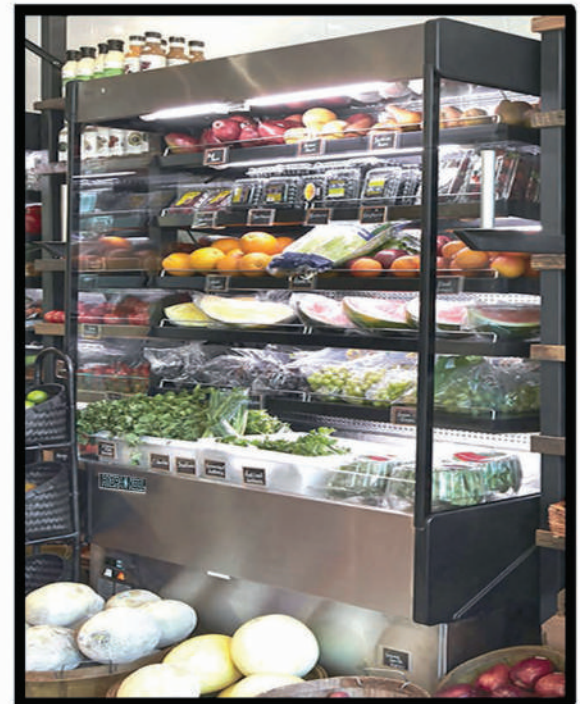
## HIGH GRAB-N-GO CASE

**MEDIUM TEMPERATURE  
OPEN FRONT  
FRONT LOAD**

### MODELS

KGH - OF - ( 30,40,50,60,80,100 ) - S

KGH - OF - ( 30,40,50,60,80,100 ) - R



Intertek



Intertek

**REMOTE AND SELF CONTAINED  
404A REF - FORCED AIR REFRIGERATION**

**AQ**  
AUTOQUOTES

**MVP**  
GROUP

Tel.: 514.737.9701 / Toll Free: 888.275.4538

Fax: 514.342.3854 / Toll Free: 877.453.8832

sales@mvpgroupcorp.com

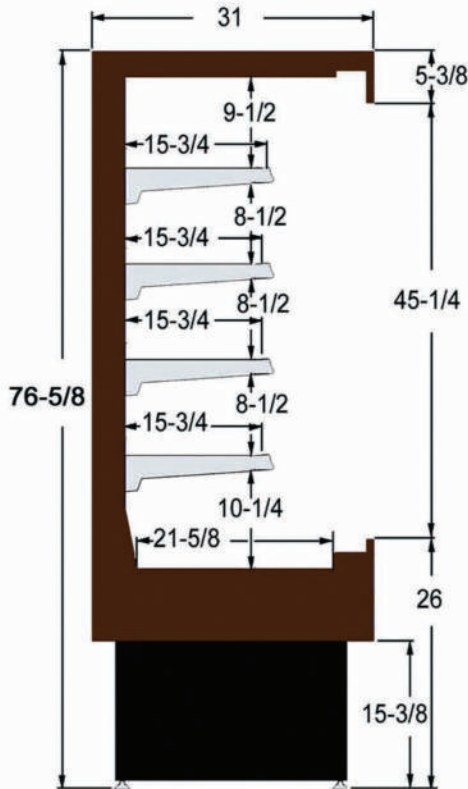
www.mvpgroupcorp.com

**KOOL-IT**

SELF CONTAINED	O.A LENGTH INCHES	CASE TEMP	ELECTRICAL								WEIGHT
			COMPRESSOR				LIGHTS AND FANS 115 VOLTS	EVAP PAN	TOTAL AMPS		
			115 VOLTS		230 VOLTS				115	230	
			F.L.A.	L.R.A.	F.L.A.	L.R.A.	VOLTS	VOLTS			
KGH-OF-30-S	29-1/8	36/41 F	10.9	55	—	—	1.8	6.7	19.4	—	408
KGH-OF-40-S	41	36/41 F	16.4	86	—	—	3.1	8.3	27.8	—	463
KGH-OF-50-S	50-1/8	36/41 F	16.4	86	—	—	3.5	8.3	28.2	—	514
KGH-OF-60-S	60-5/8	36/41 F	—	—	9.2	51	3.6	8.3	12.0	9.2	580
KGH-OF-80-S	78-1/8	36/41 F	—	—	(2) 8.2	(2) 43	4.0	8.3	12.3	16.4	752
KGH-OF-100-S	96-5/8	36/41 F	—	—	(2) 8.2	(2) 43	4.9	8.3	13.2	16.4	939

REMOTE	MODEL	O.A LENGTH INCHES	CASE TEMP	115 VOLTS TOTAL AMPS	B.T.U.	WEIGHT
	KGH-OF-30-R	29-1/8	36/41 F	1.1	3756	342
	KGH-OF-40-R	41	36/41 F	1.4	5286	353
	KGH-OF-50-R	50-1/8	36/41 F	1.8	6463	403
	KGH-OF-60-R	60-5/8	36/41 F	2.0	7817	463
	KGH-OF-80-R	78-1/8	36/41 F	2.5	10073	562
	KGH-OF-100-R	96-5/8	36/41 F	3.8	12459	697

THESE CASES ARE DESIGNED TO OPERATE USING R404A REFRIGERANT  
 B.T.U.'S CALCULATED AT +14° F EVAP AND 90° F AMBIENT  
 CASES ENGINEERED TO OPERATE AT 75° F AND 55% RH  
 THE O.A. DIMENSION INCLUDES (2) 1-7/8" ENDS



**STANDARD FEATURES**

- INSULATION - INJECTED FOAM
- INTERIOR - PVC COATED STEEL-GRAY
- EXTERIOR - PVC COATED STEEL-SILVER
- ENDS-FOAMED -BLACK POLYSTYRENE
- PULL DOWN NIGHT CURTAIN
- CORD AND PLUG - ON 20 AMP OR LESS
- CASES ARE MULTIPLEXIBLE
- LED LIGHTING IN CANOPY AND UNDER ALL SHELVES
- PRODUCT STOPS ON ALL SHELVES
- DEFROST AND TEMPERATURE REGULATED BY A DIGITAL CONTROLLER
- ADJUSTABLE SHELVES
- ADJUSTABLE FEET
- ETL LISTED TO UL471 AND SANITATION CLASSIFIED TO NSF7
- EVAPORATIVE DRAIN PAN ON S/C

**OPTIONAL FEATURES**

- CASTERS - ADD 4-3/8" TO HEIGHT
- ADJUSTABLE STAINLESS STEEL LEGS- FROM 5-1/8" TO 7-5/8"
- IF THERE IS NO FLOOR DRAIN AN EVAP PAN MUST BE ORDERED ADD 8.3 AMPS TO 115V. - ON REMOTE
- OTHER COLORS AVAILABLE
- STAINLESS STEEL EXTERIOR
- STAINLESS STEEL INTERIOR
- ADDITIONAL SHELVES
- NIGHT LOCKING SECURITY COVER
- PRICE TAG MOULDING
- FULL GLASS OR SOLID ENDS

**WARRANTY**

ONE YEAR PARTS AND LABOR WITH FOUR ADDITIONAL YEARS COMPRESSOR (PARTS ONLY)